

**BLDG. E (OPAL) - UPPER GROUND FLOOR PLAN**

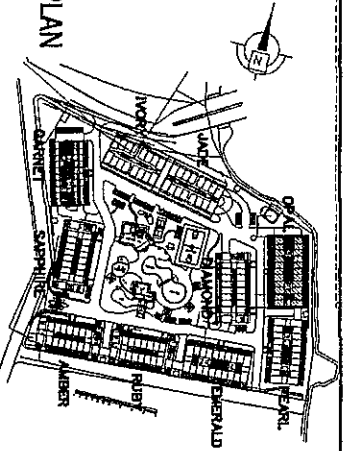
*Rosewood Pointe*

25 APRIL 2007

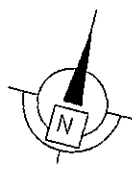


02/07 9/14

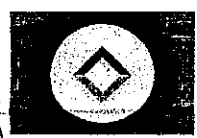
**KEY PLAN**



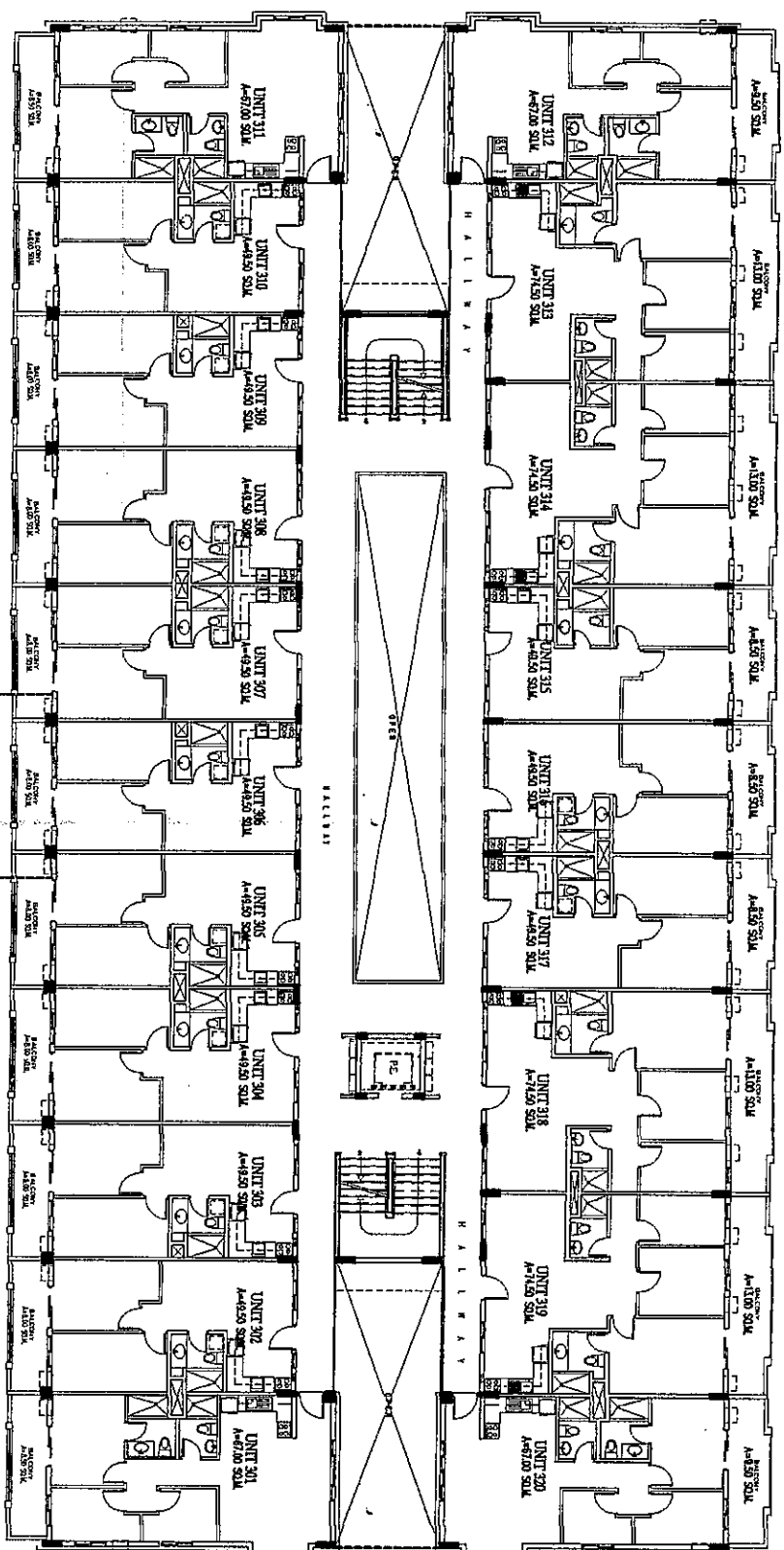
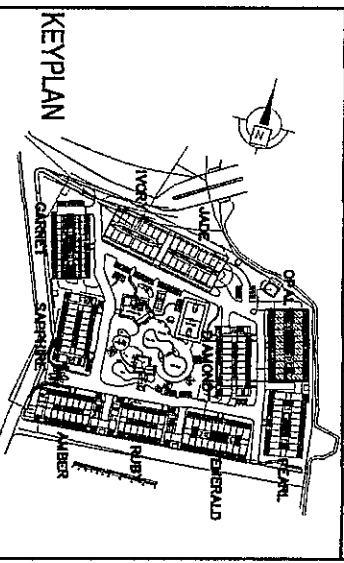




FACING BLDG. J



*Rosewood Pointe*  
 BLDG. E (OPAL) - THIRD - FIFTH FLOOR PLAN  
 25 APRIL 2007



FACING ANTIPOLLO HILLS

4/24

