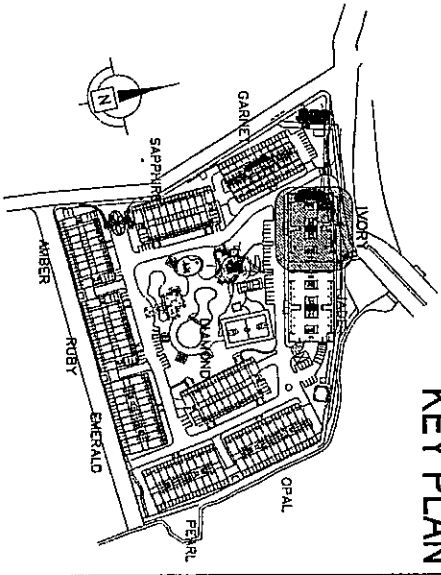


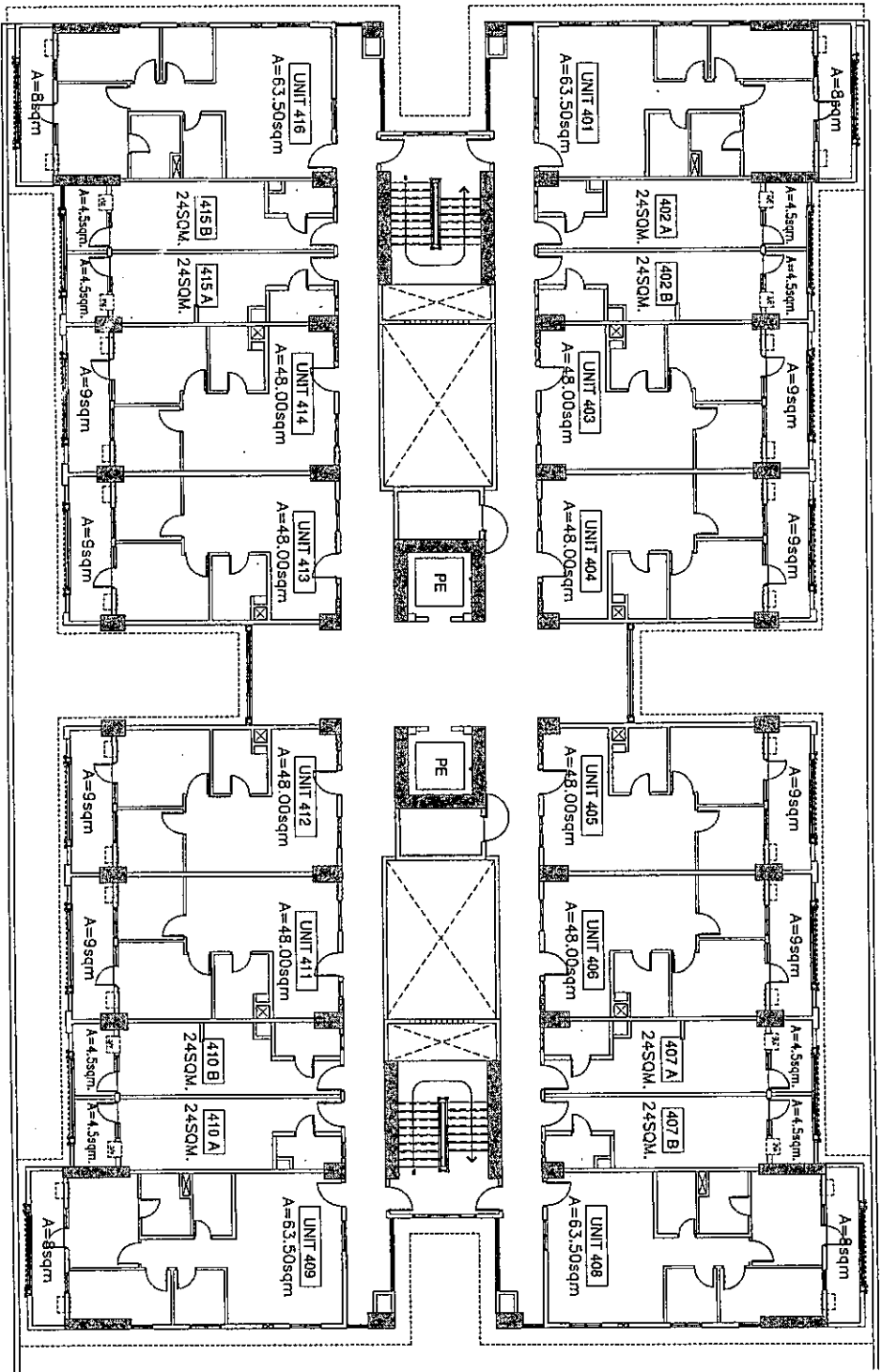
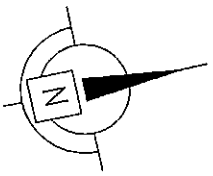
ROSEWOOD POINTE
BLDG. G - IVORY
3RD FLOOR PLAN
NOVEMBER 20, 2008

NO.	DATE	REVISIONS
A/	02/28/08	FOR REFERENCE
A/	07/28/08	INTRODUCTION OF STUDIO UNITS
A/	09/28/08	UNITS 410, 307 & 815-CONVERTED TO STUDIO UNITS
A/	11/20/08	SELECTED STUDIO UNITS - BACK TO 2 BEDROOM LAYOUT

NOTED BY:	
RMS	<i>[Signature]</i>
GSA	<i>[Signature]</i>
EGC	<i>[Signature]</i>

KEY PLAN





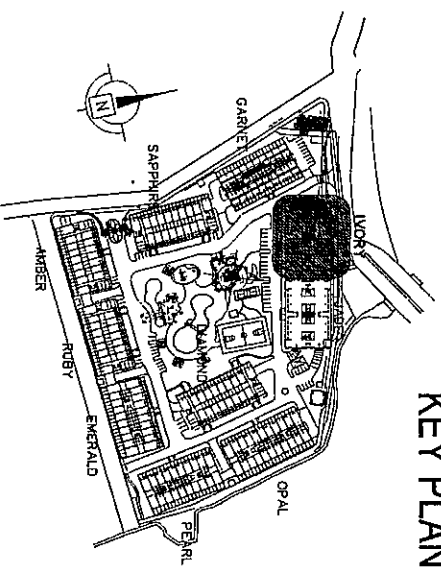
ROSEWOOD POINTE
BLDG. G - IVORY
4TH FLOOR PLAN
NOVEMBER 21, 2008

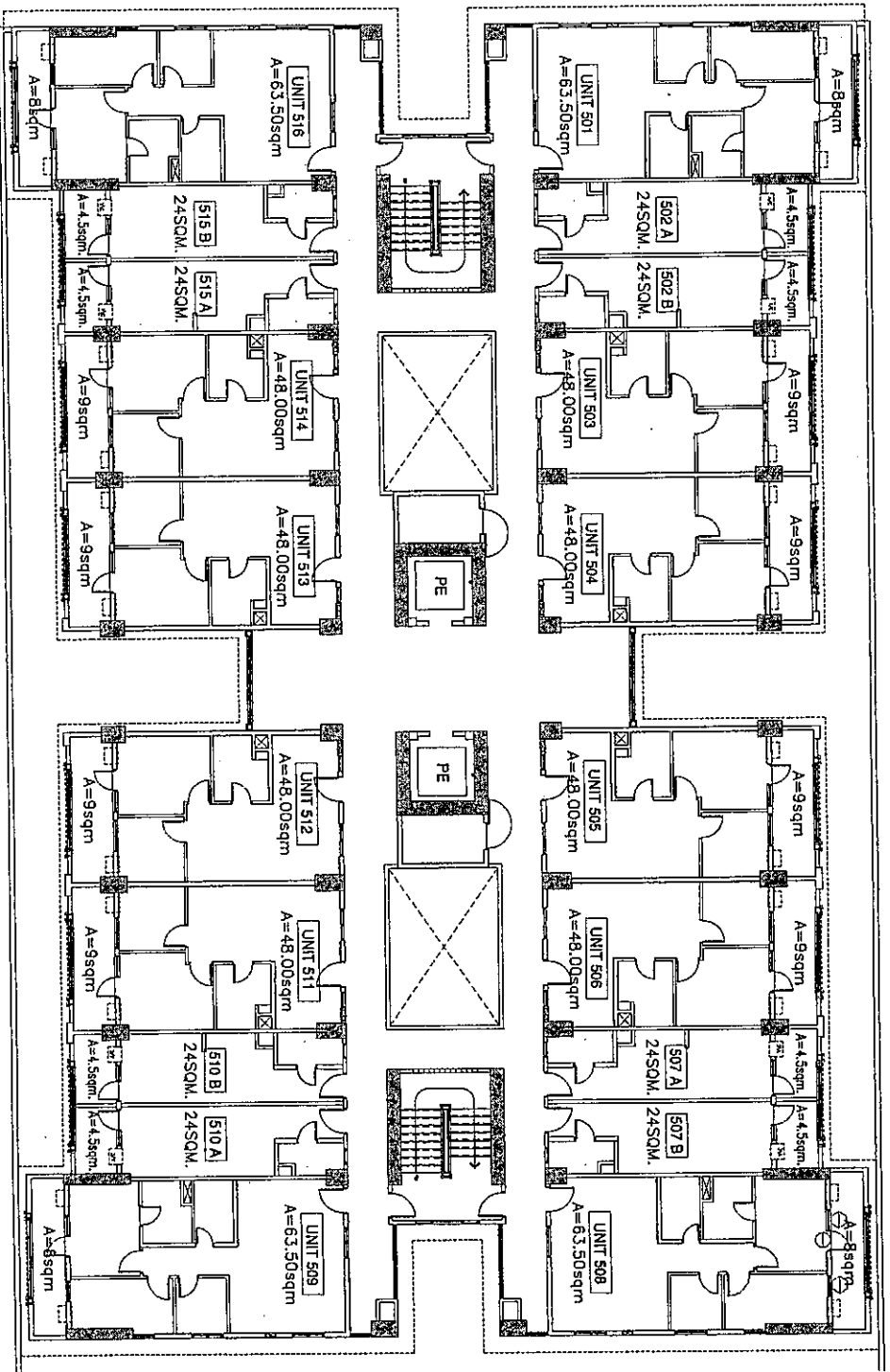
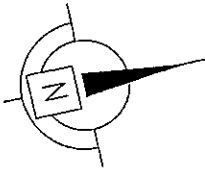
NOTED BY:

RMS	<i>[Signature]</i>
GSA	<i>[Signature]</i>
ECC	<i>[Signature]</i>

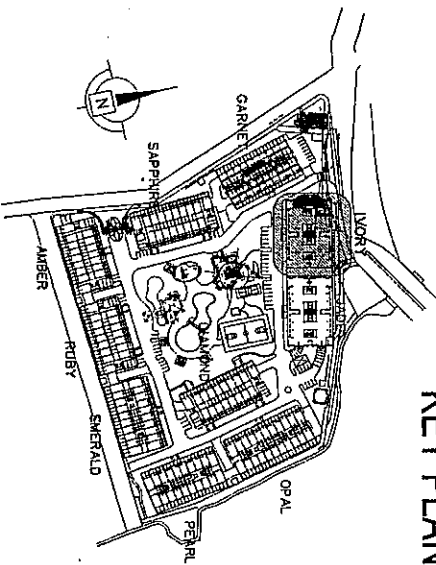
KEY PLAN

NO. DATE	REVISIONS
1	ISSUED FOR REFERENCE
2	ISSUED INTRODUCTION OF STUDO UNITS
3	ISSUED UNITS 410, 407 & 415-CONNECTED TO STUDO UNITS
4	11/20/08 SELECTED STUDO UNITS - BACK TO 2 BEDROOM LAYOUT





ROSEWOOD POINTE
BLDG. G - IVORY
5TH FLOOR PLAN
NOVEMBER 21, 2008



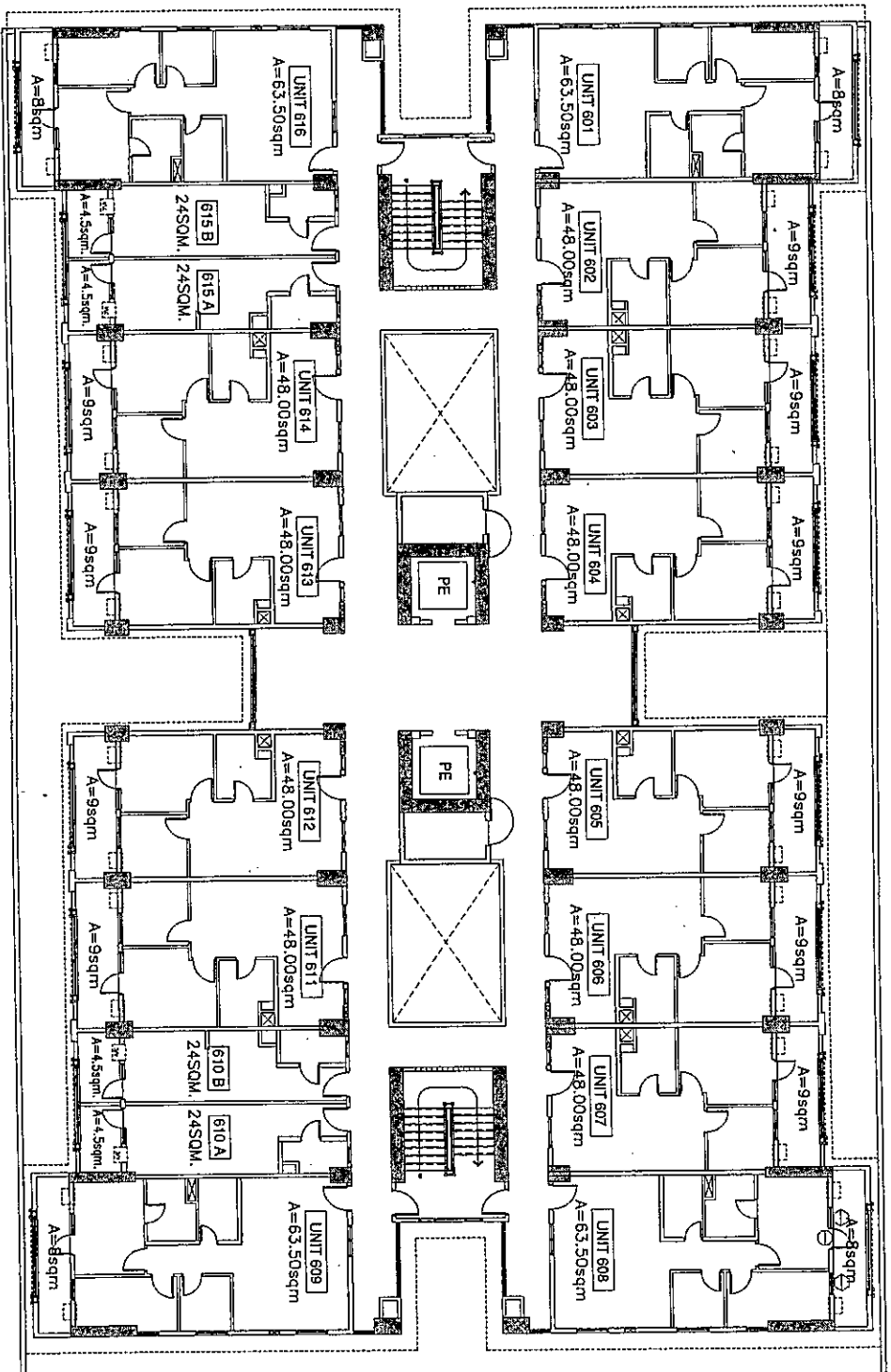
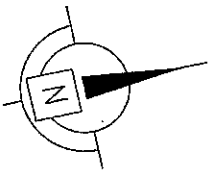
NO. DATE | REVISIONS

1	02/28/08	FOR REFERENCE
2	07/28/08	INTRODUCTION OF STUDIO UNITS
3	08/27/08	UNITS 410, 407 & 415 CONVERTED TO STUDIO UNITS.
4	11/20/08	SELECTED STUDIO UNITS - BACK TO 2 BEDROOM LAYOUT

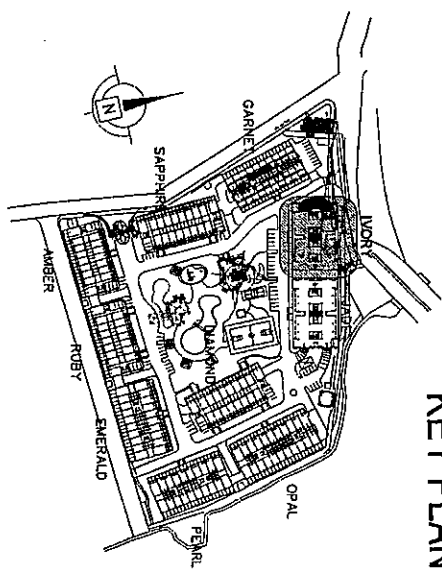
NOTED BY:

RMS	<i>[Signature]</i>
GSA	<i>[Signature]</i>
ECC	<i>[Signature]</i>

KEY PLAN



ROSEWOOD POINTE
 BLDG. G - IVORY
 TYP. 6TH & 7TH FLOOR PLAN
 NOVEMBER 21, 2008



NO DATE REVISIONS

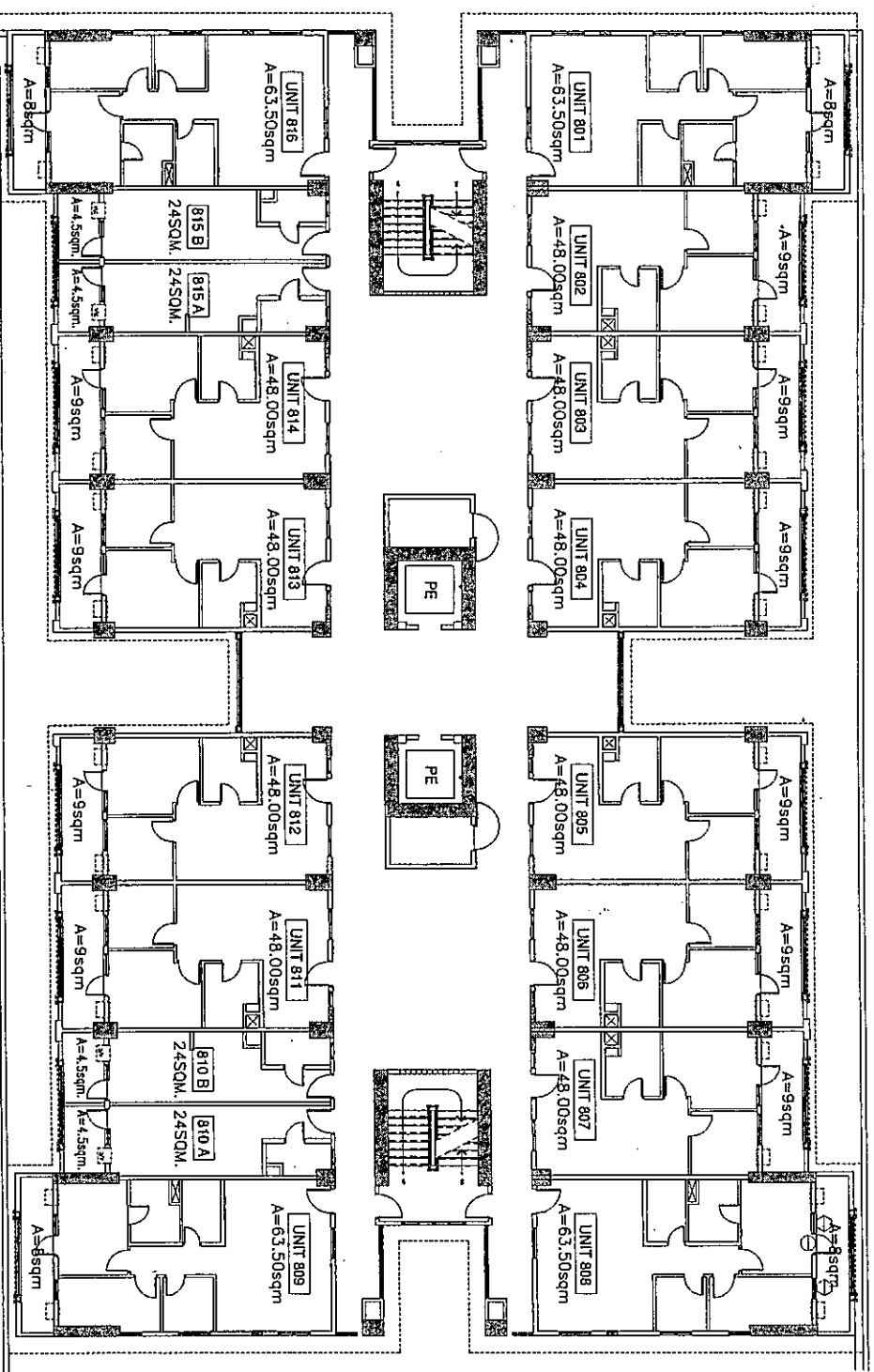
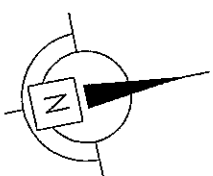
Δ	DESIGN FOR REFERENCE
Δ	07/2008 INTRODUCTION OF STUDIO UNITS
Δ	08/2008 UNITS 410, 607 & 615-CONVERTED TO STUDIO UNITS
Δ	11/2008 SELECTED STUDIO UNITS - BACK TO 2 BEDROOM LAYOUT

NOTED BY:

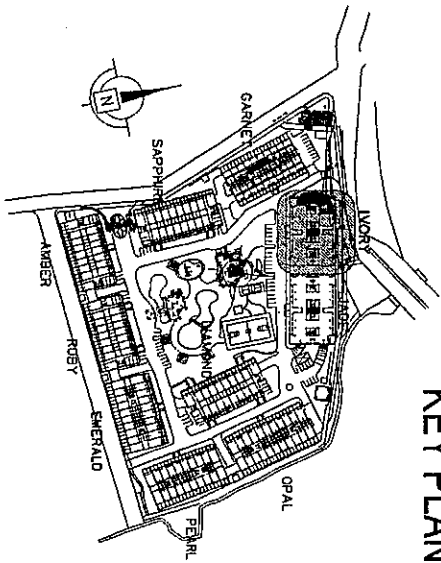
RMS	<i>[Signature]</i>
GSA	<i>[Signature]</i>
ECC	<i>[Signature]</i>

KEY PLAN





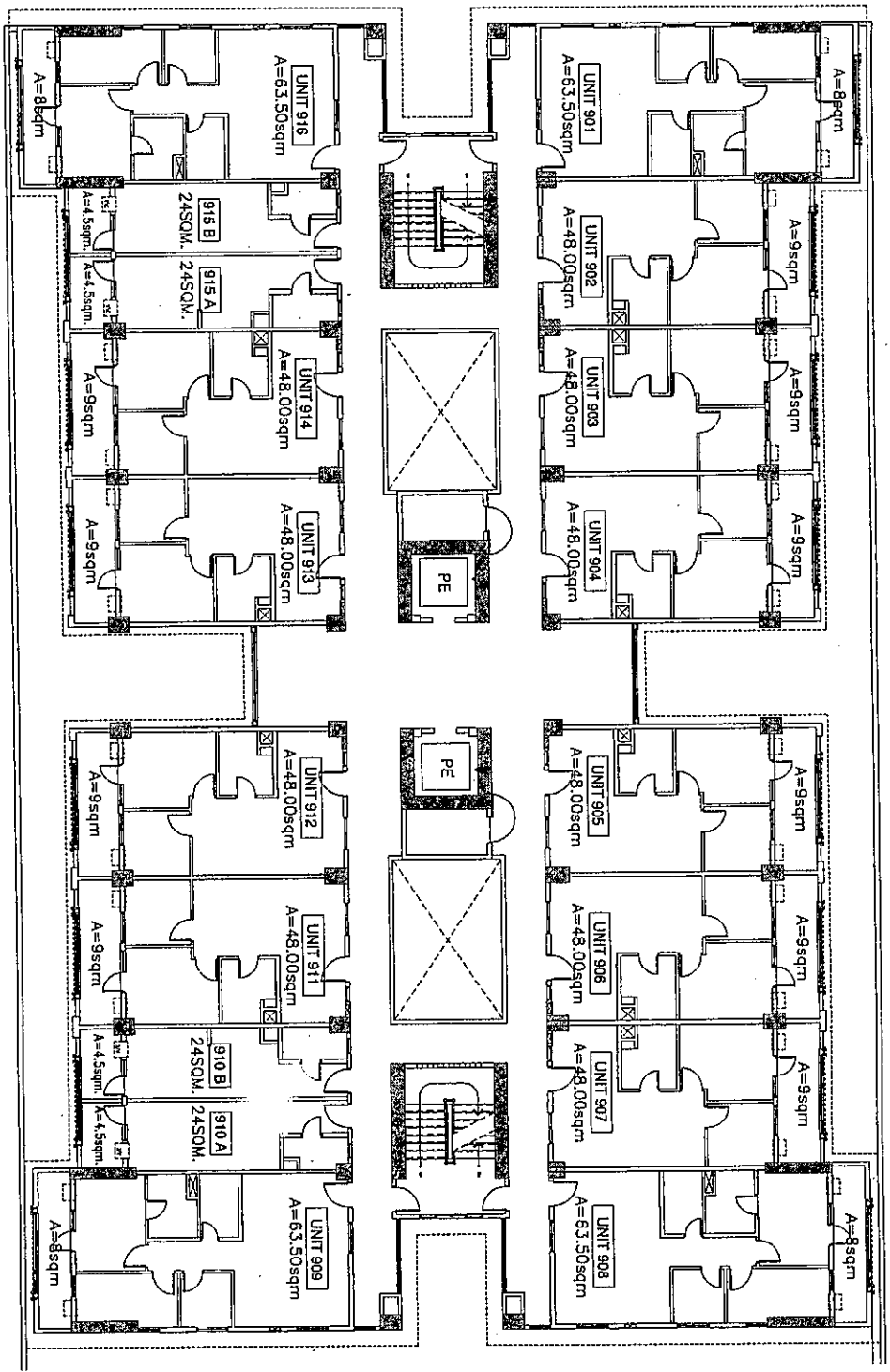
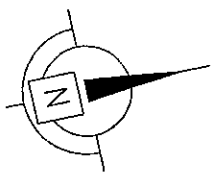
ROSEWOOD POINTE
BLDG. G - IVORY
8TH FLOOR PLAN
NOVEMBER 21, 2008



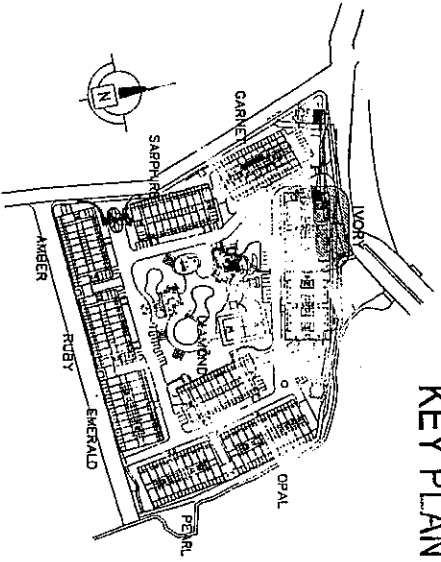
KEY PLAN

NOTED BY:	
RMS	<i>[Signature]</i>
GSA	<i>[Signature]</i>
EGC	<i>[Signature]</i>

NO.	DATE	REVISIONS
1	02/20/08	FOR REFERENCE
2	02/20/08	INTRODUCTION OF STUDIO UNITS
3	02/20/08	UNITS 801 AND 807 & 815-CONVERTED TO STUDIO UNITS
4	11/20/08	SELECTED STUDIO UNITS -
		BACK TO 2 BEDROOM LAYOUT



ROSEWOOD POINTE
BLDG. G - IVORY
TYP. 9TH & 10TH FLOOR PLAN
NOVEMBER 21, 2008



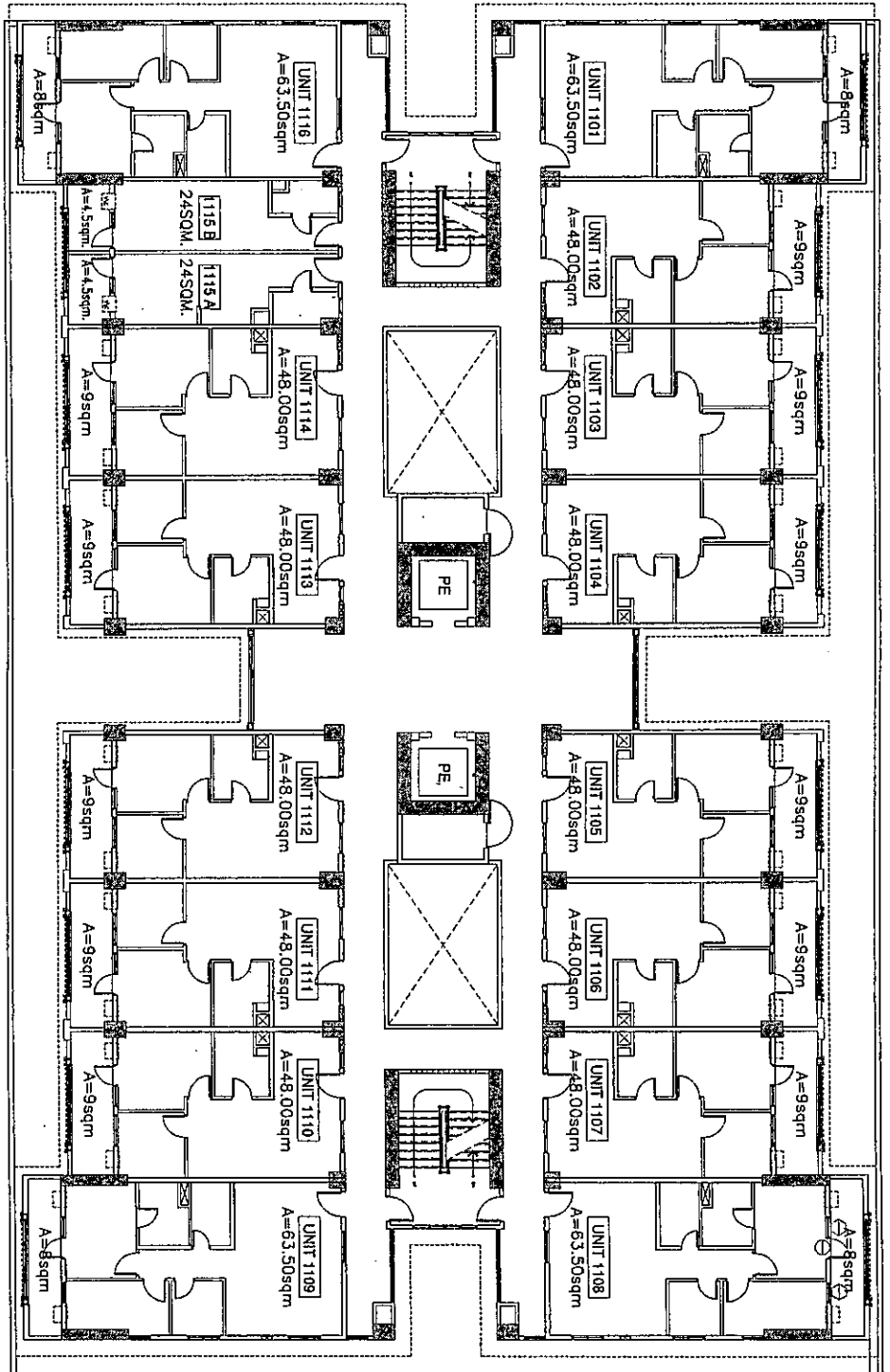
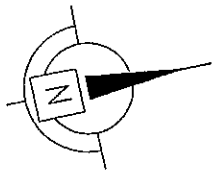
NO DATE REVISIONS

A/022808	FOR REFERENCE
A/022808	INTRODUCTION OF STUDIO UNITS
A/081208	UNITS 410, 801 & 815 - CONVERTED TO STUDIO UNITS
A/112808	SELECTED STUDIO UNITS - BACK TO 2 BEDROOM (1,200)

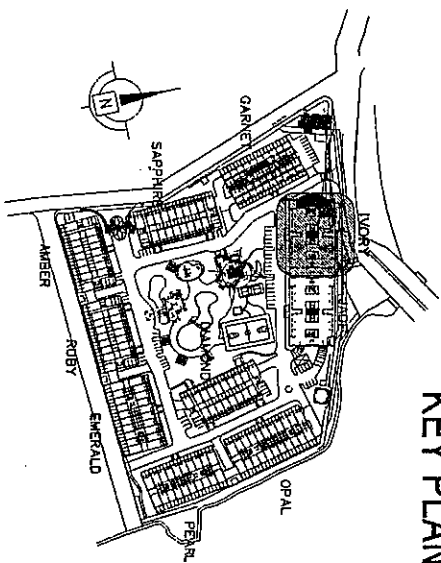
NOTED BY:

RMS	<i>[Signature]</i>
GSA	<i>[Signature]</i>
EGC	<i>[Signature]</i>

KEY PLAN



ROSEWOOD POINTE
BLDG. G - IVORY
TYP. 11TH & 12TH FLOOR PLAN
NOVEMBER 21, 2008



NOTED BY:

RMS	MSB	2/20/08
GSA	AL	02/24/08
EGC	AL	10/21/08

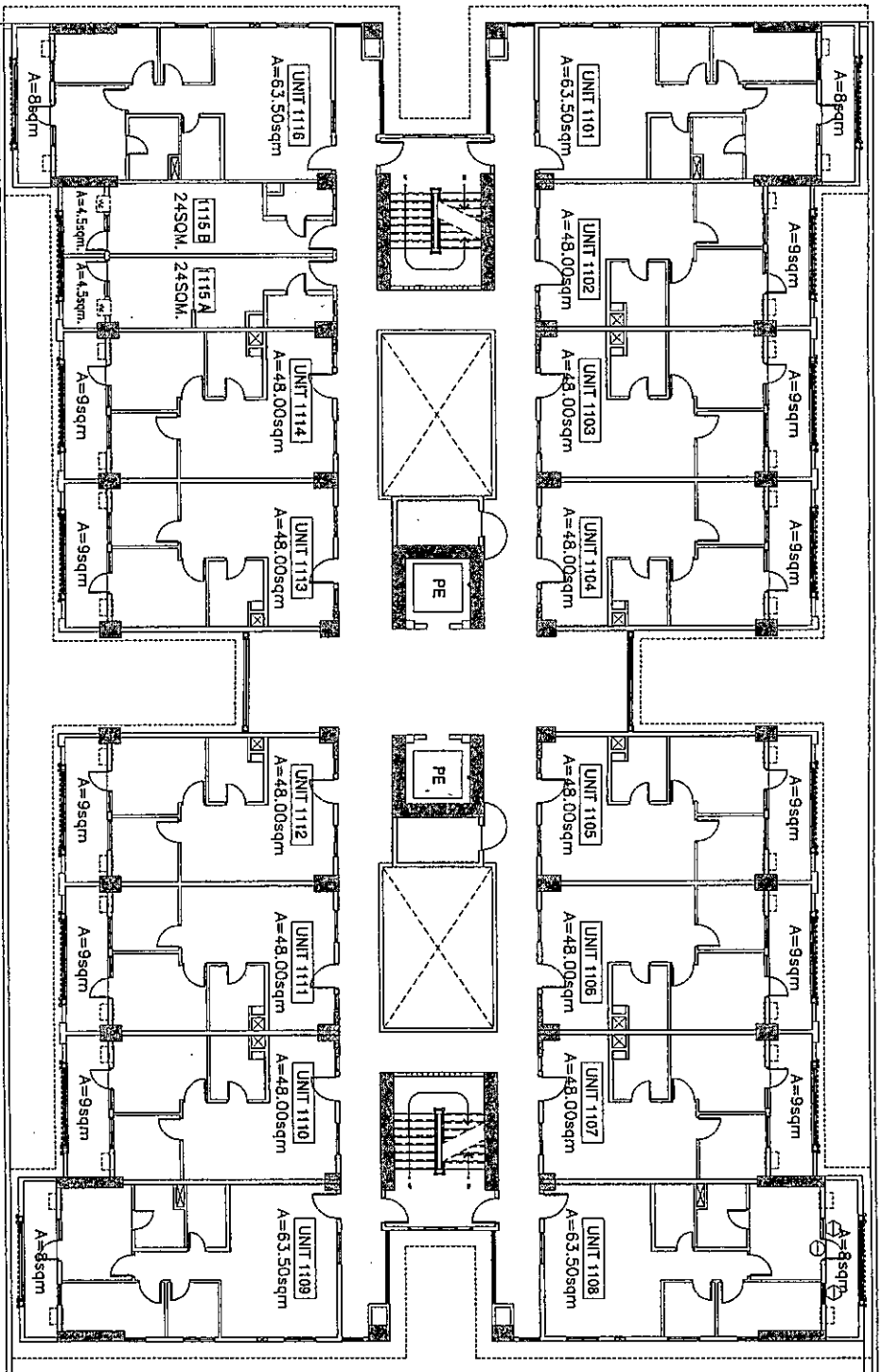
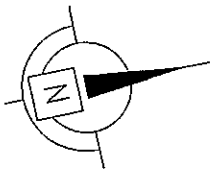
NOTED BY:

RMS	MSB	2/20/08
GSA	AL	02/24/08
EGC	AL	10/21/08

KEY PLAN

NO. DATE REVISIONS

1	02/20/08	FOR REFERENCE
2	02/20/08	INTRODUCTION OF STUDIO UNITS
3	02/20/08	UNITS 410, 807 & 812 - CONVERTED TO STUDIO UNITS
4	11/20/08	SELECTED STUDIO UNITS - BACK TO 2 BEDROOM LAYOUT

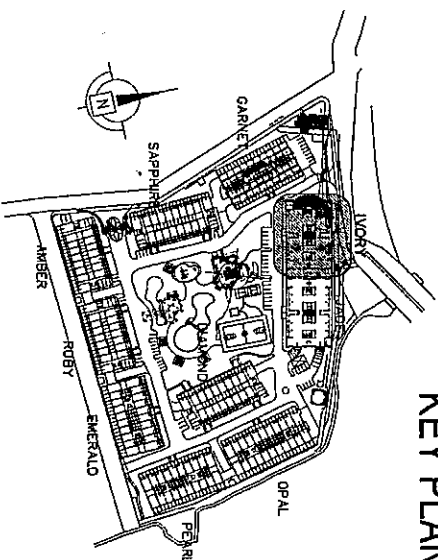


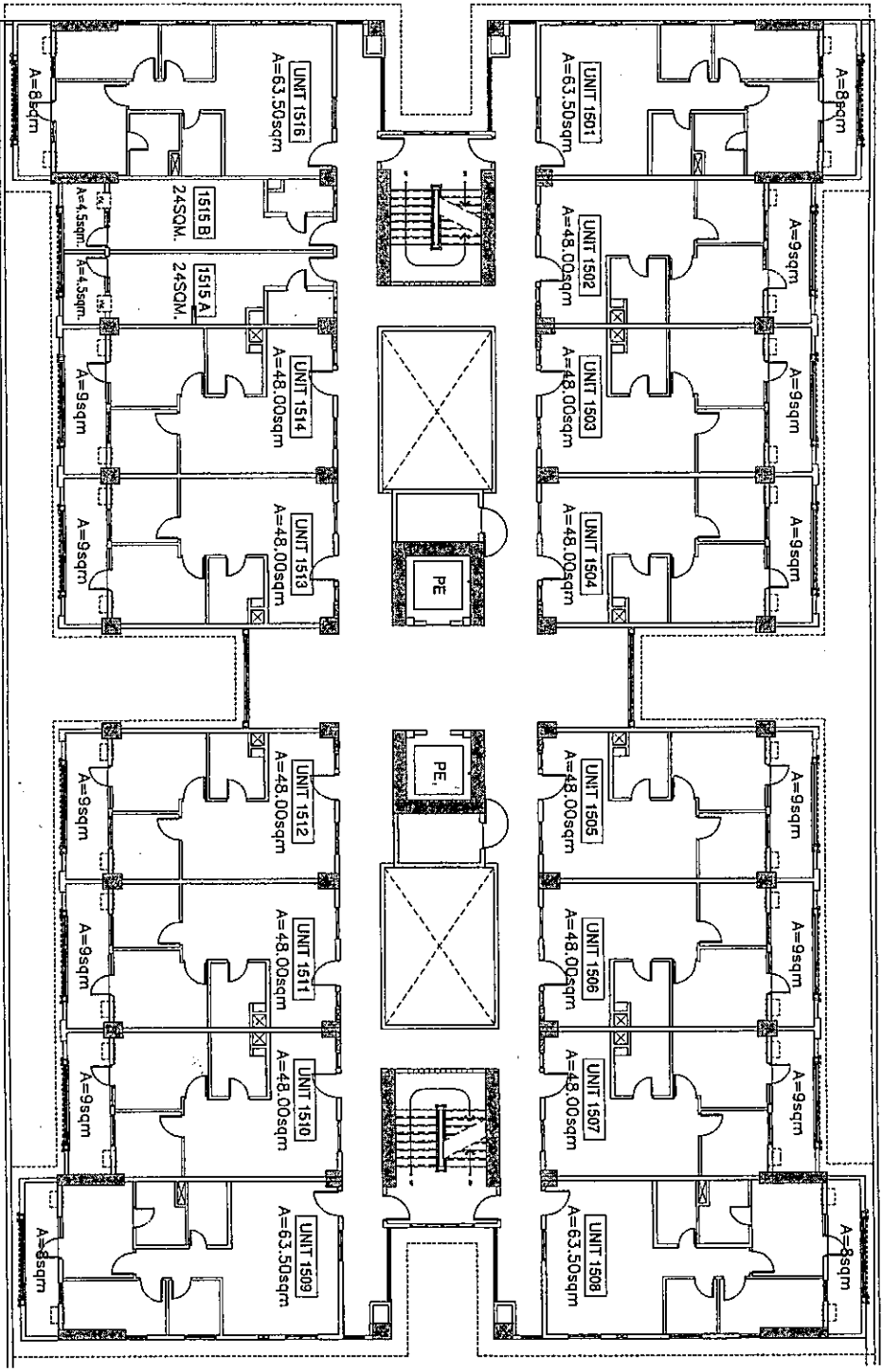
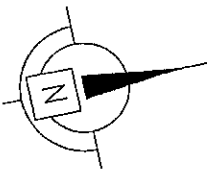
ROSEWOOD POINTE
BLDG. G - IVORY
TYP. 11TH & 12TH FLOOR PLAN
NOVEMBER 21, 2008

NO.	DATE	REVISIONS
1	02/20/08	FOR REVISION
2	02/20/08	INTRODUCTION OF STUDIO UNITS
3		UNITS 1101, 1102 & 1103 CONVERTED TO STUDIO UNITS
4	11/20/08	SELECTED STUDIO UNITS - BACK TO 2 BEDROOM LAYOUT

NOTED BY:	
RMS	<i>[Signature]</i>
GSA	<i>[Signature]</i>
EGC	<i>[Signature]</i>

KEY PLAN





ROSEWOOD POINTE
 BLDG. G - IVORY
 TYP. 15TH, 16TH, 17TH & 18TH FLOOR PLAN
 NOVEMBER 21, 2008

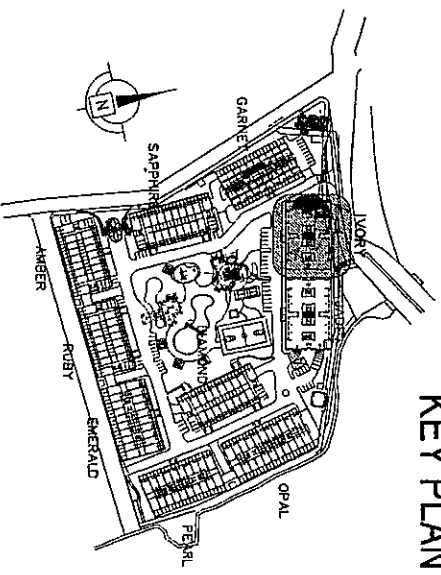
NO. DATE REVISIONS

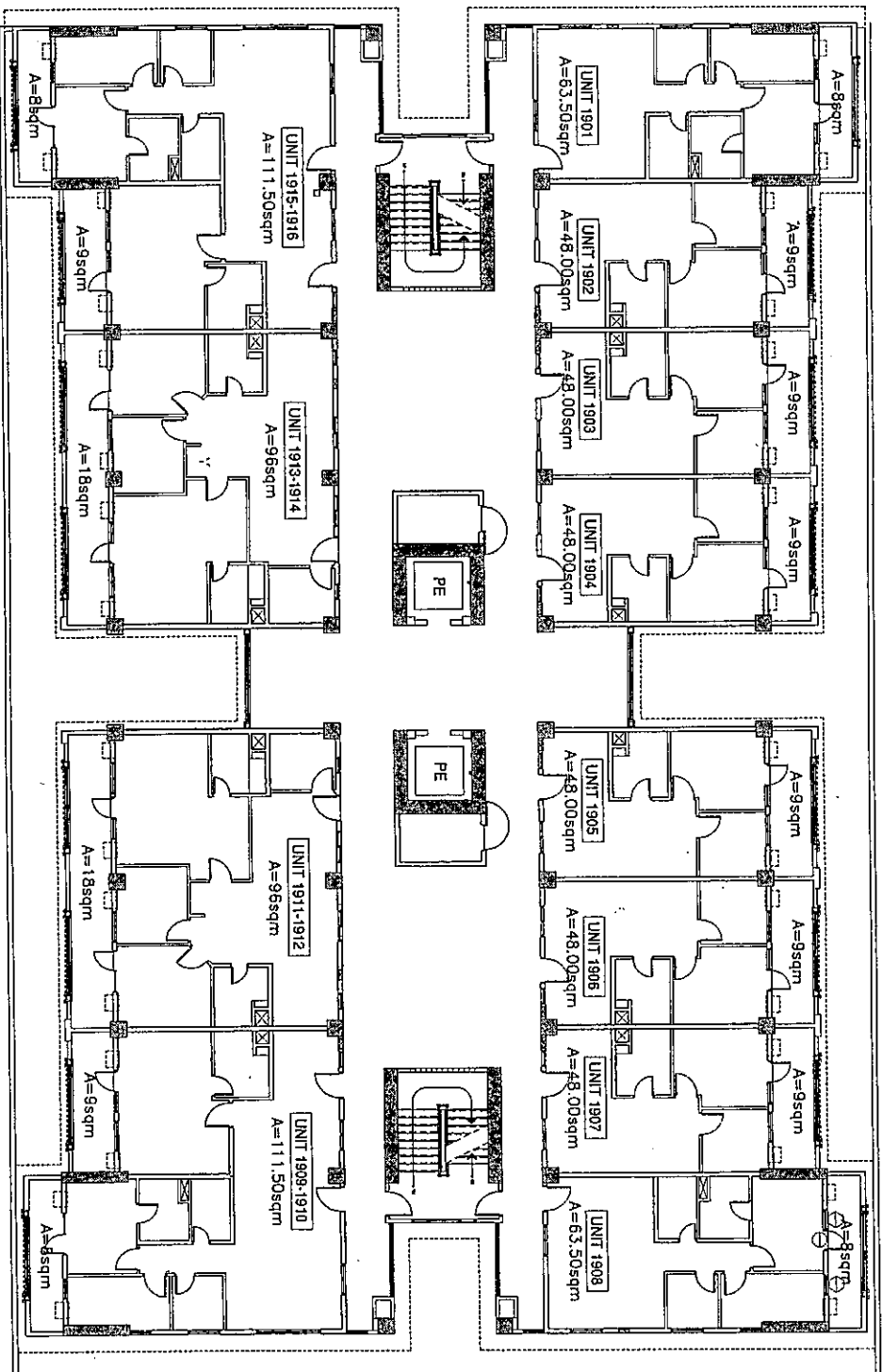
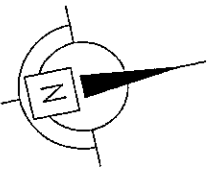
1	10/28/08	FOR REFERENCE
2	10/28/08	INTRODUCTION OF STUDIO UNITS
3	09/23/08	UNITS 110, 207 & 215-CONVERTED TO STUDIO UNITS
4	11/20/08	SELECTED STUDIO UNITS - BACK TO 2-BEDROOM LAYOUT

NOTED BY:

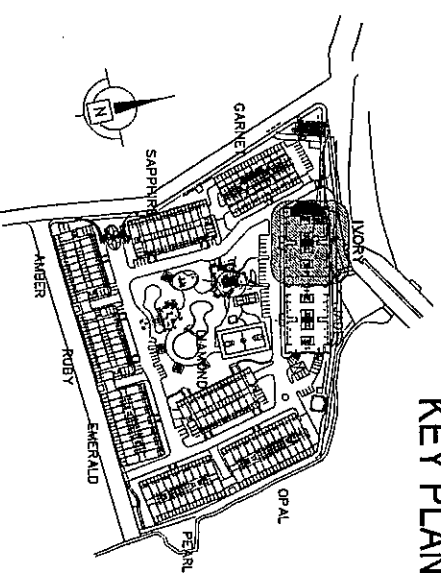
RMS	<i>[Signature]</i>
GSA	<i>[Signature]</i>
EGC	<i>[Signature]</i>

KEY PLAN





ROSEWOOD POINTE
 BLDG. G - IVORY
 19TH FLOOR PLAN
 NOVEMBER 21, 2008

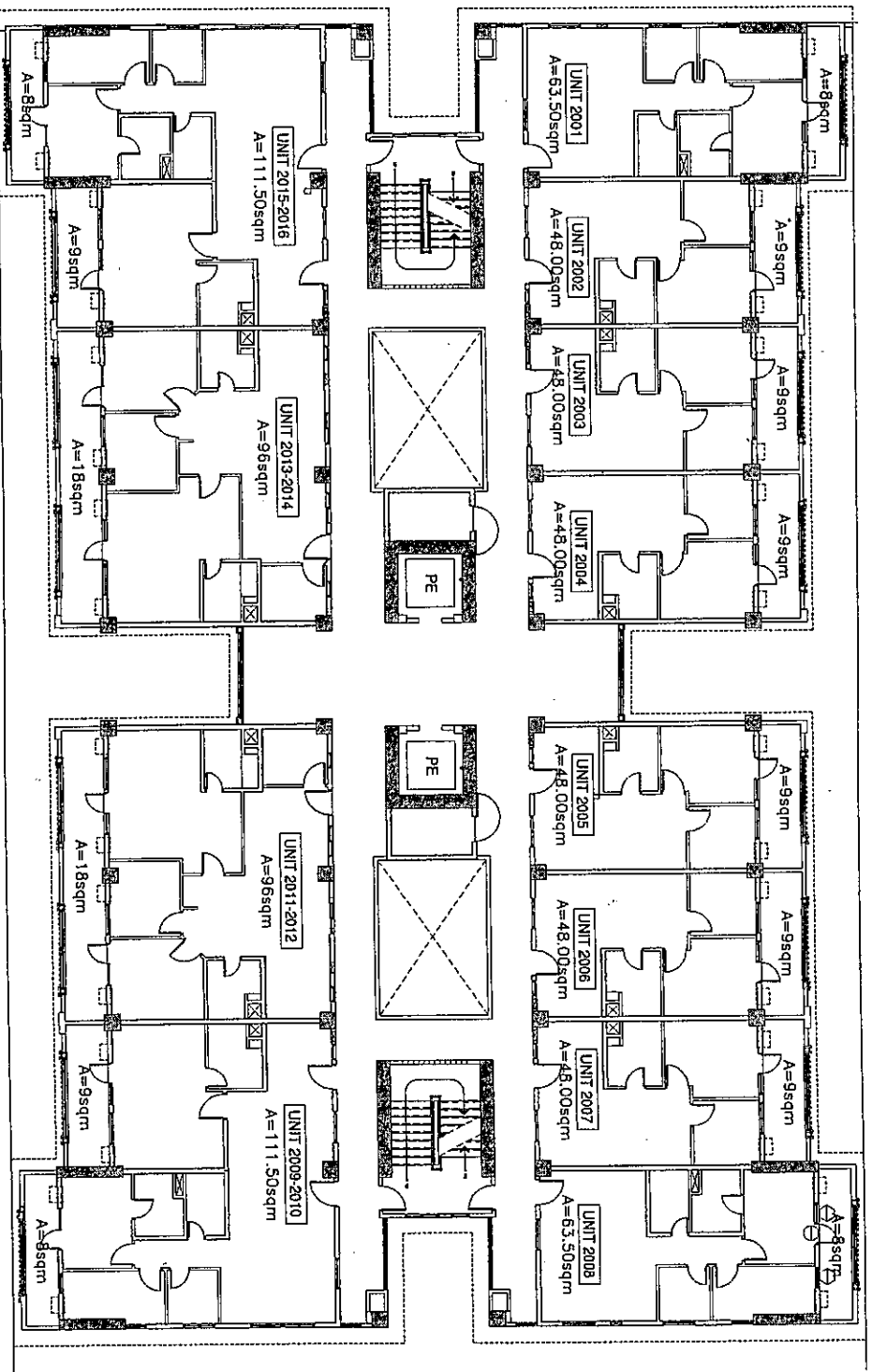
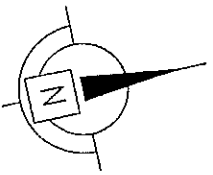


NO.	DATE	REVISIONS
1	11/22/08	FOR REFERENCE

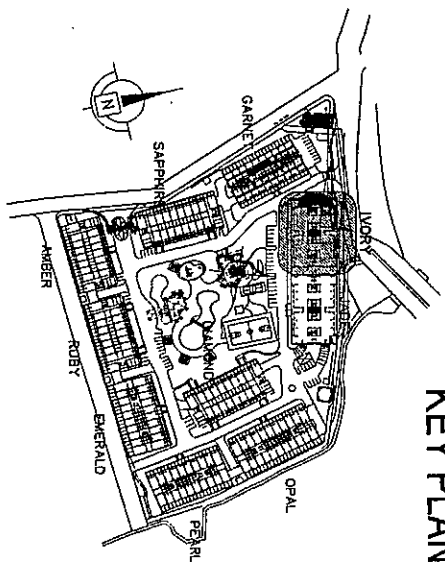
NOTED BY:	
RMS	<i>[Signature]</i>
GSA	<i>[Signature]</i>
EGC	<i>[Signature]</i>

KEY PLAN





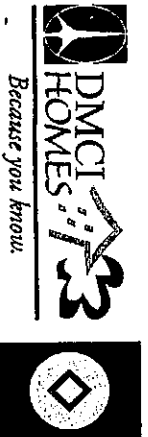
ROSEWOOD POINTE
BLDG. G - IVORY
20TH FLOOR PLAN
NOVEMBER 21, 2008

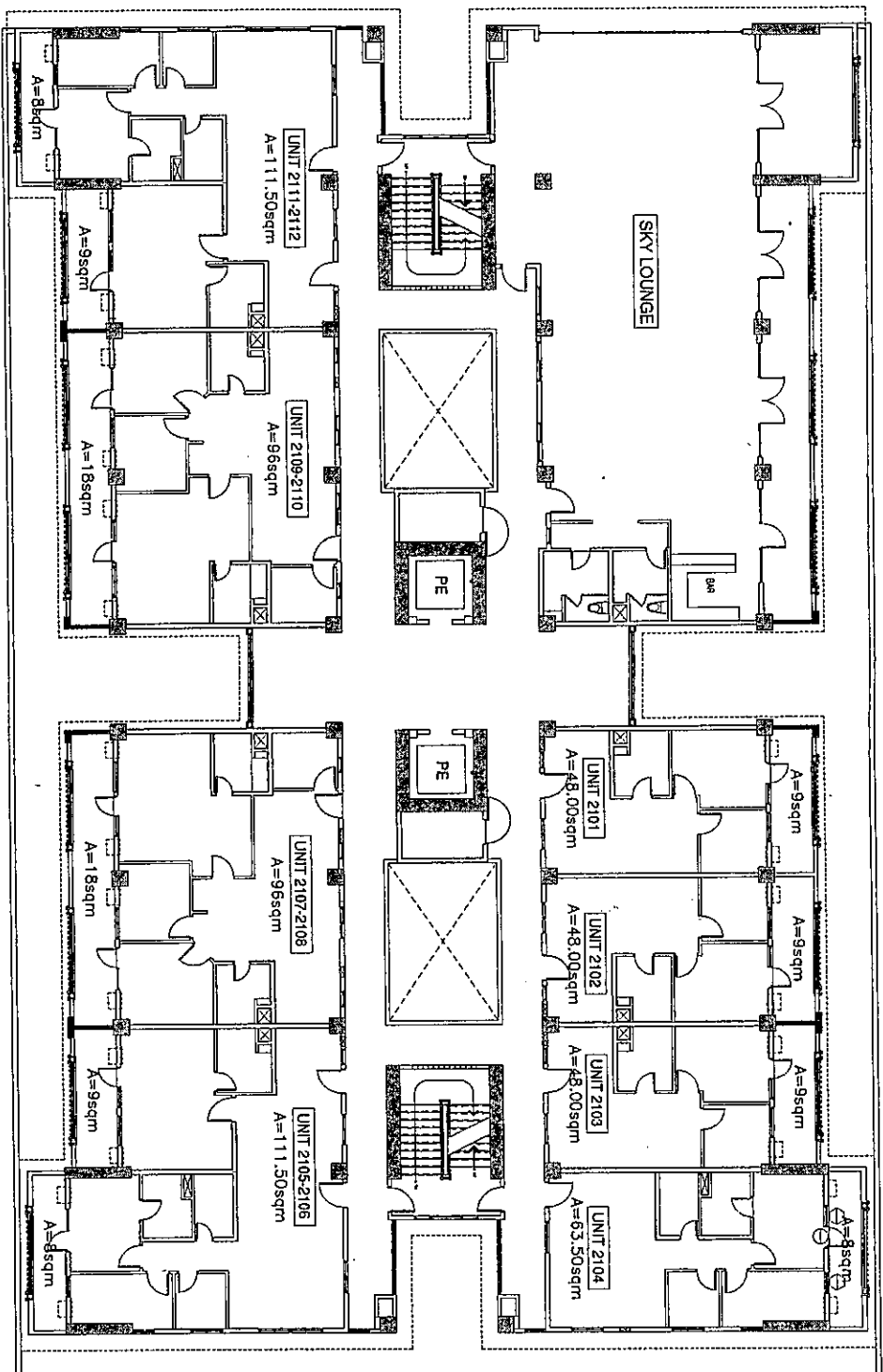
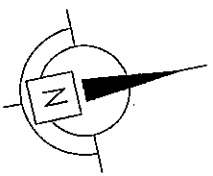


KEY PLAN

NO.	DATE	REVISIONS
1	02/26/08	FOR REFERENCE

NOTED BY:	
RMS	<i>[Signature]</i>
GSA	<i>[Signature]</i>
EGC	<i>[Signature]</i>





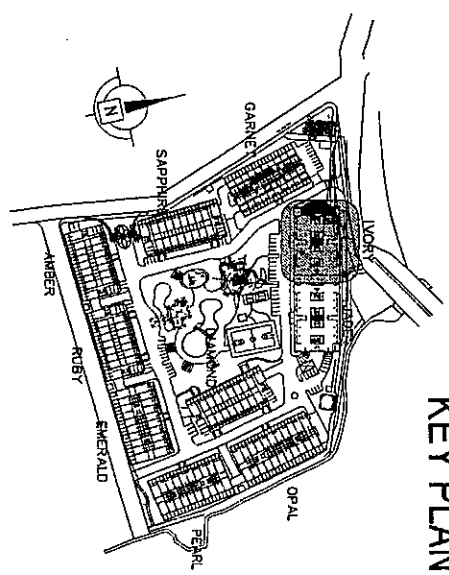
ROSEWOOD POINTE
 BLDG. G - IVORY
 21ST FLOOR PLAN
 NOVEMBER 21, 2008

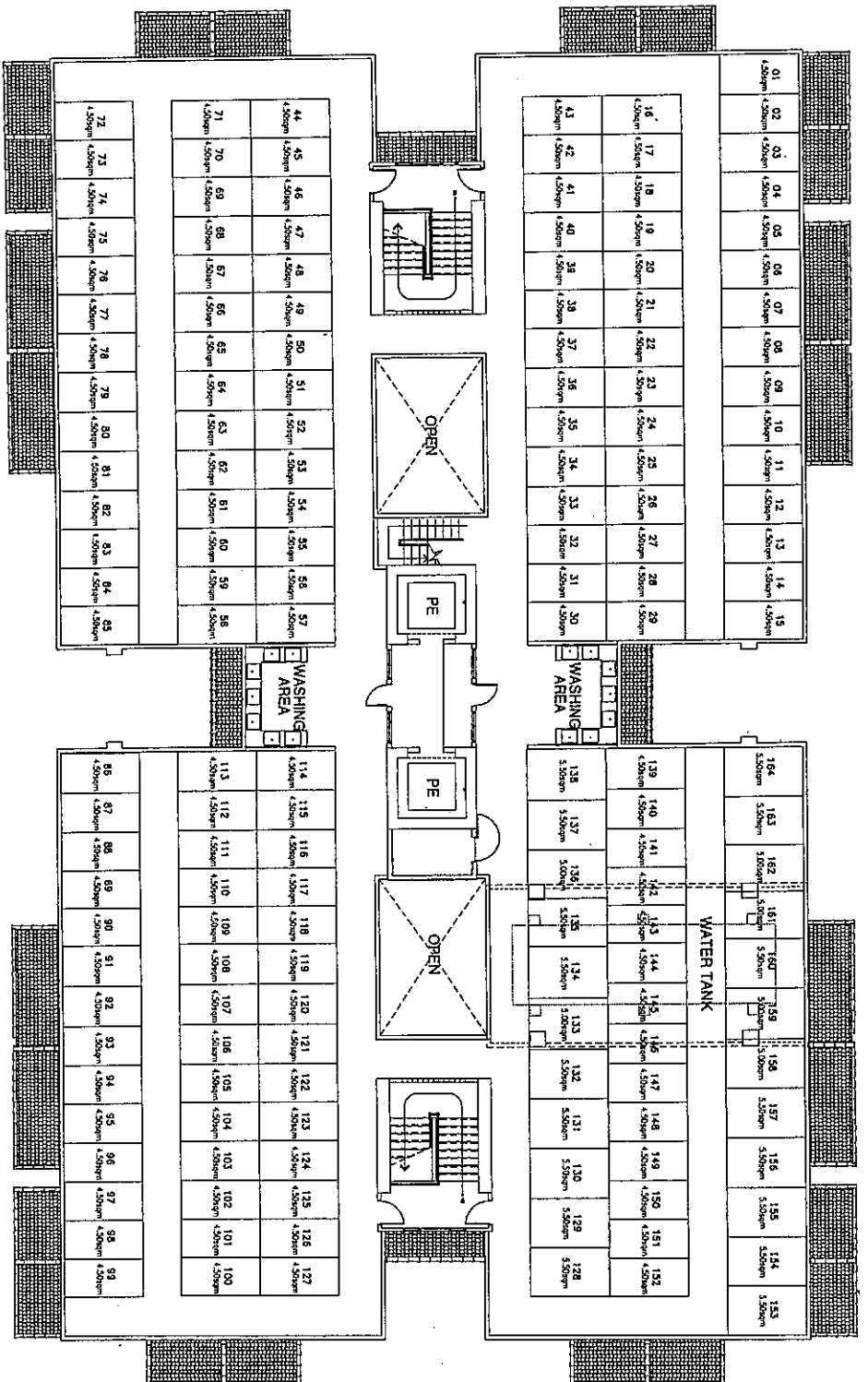
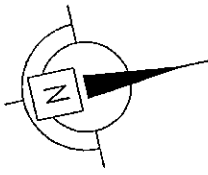


NO.	DATE	REVISIONS
1	02/20/09	FOR REFERENCE

NOTED BY:	
RMS	<i>[Signature]</i>
GSA	<i>[Signature]</i>
EGC	<i>[Signature]</i>

KEY PLAN





ROSEWOOD POINTE
BLDG. G - IVORY
LAUNDRY CAGE LAYOUT
NOVEMBER 21, 2008

NO DATE REVISIONS
A: 10/23/08 FOR REFERRED

NOTED BY:

RMS *[Signature]*
GSA *[Signature]*
EGC *[Signature]*

KEY PLAN

