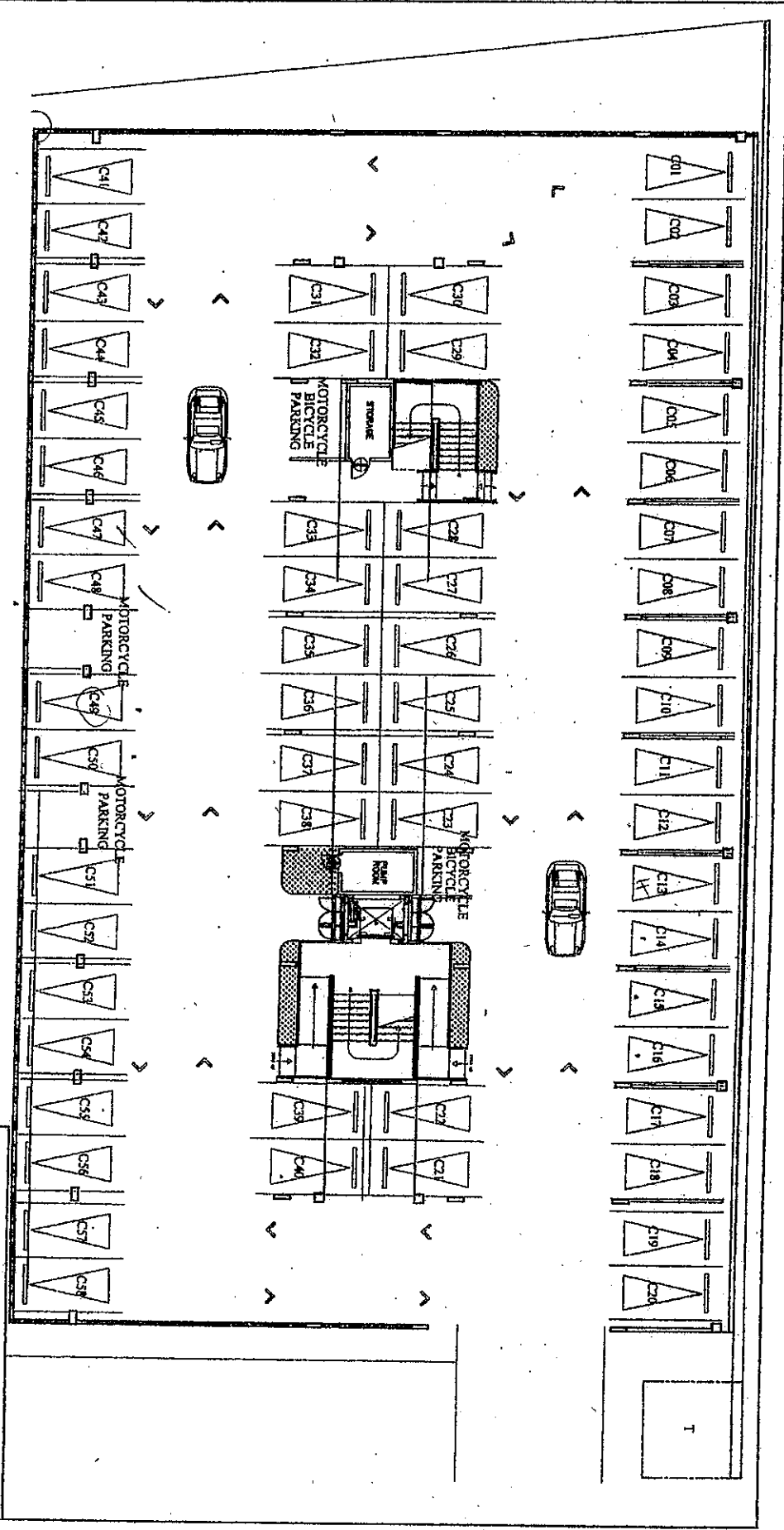
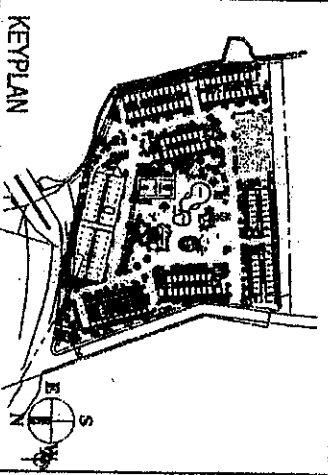




**D.M. CONSUNJI, INC.**  
 ENGINEERS - CONTRACTORS  
 2281 PUSING TIRD, BOPKON, JAKART CITY  
 TEL. NO. 541-0811

*Rawood Pointe*  
**BLDG. C - LOWER GROUND FLOOR PLAN**  
 20 SEPTEMBER 2006

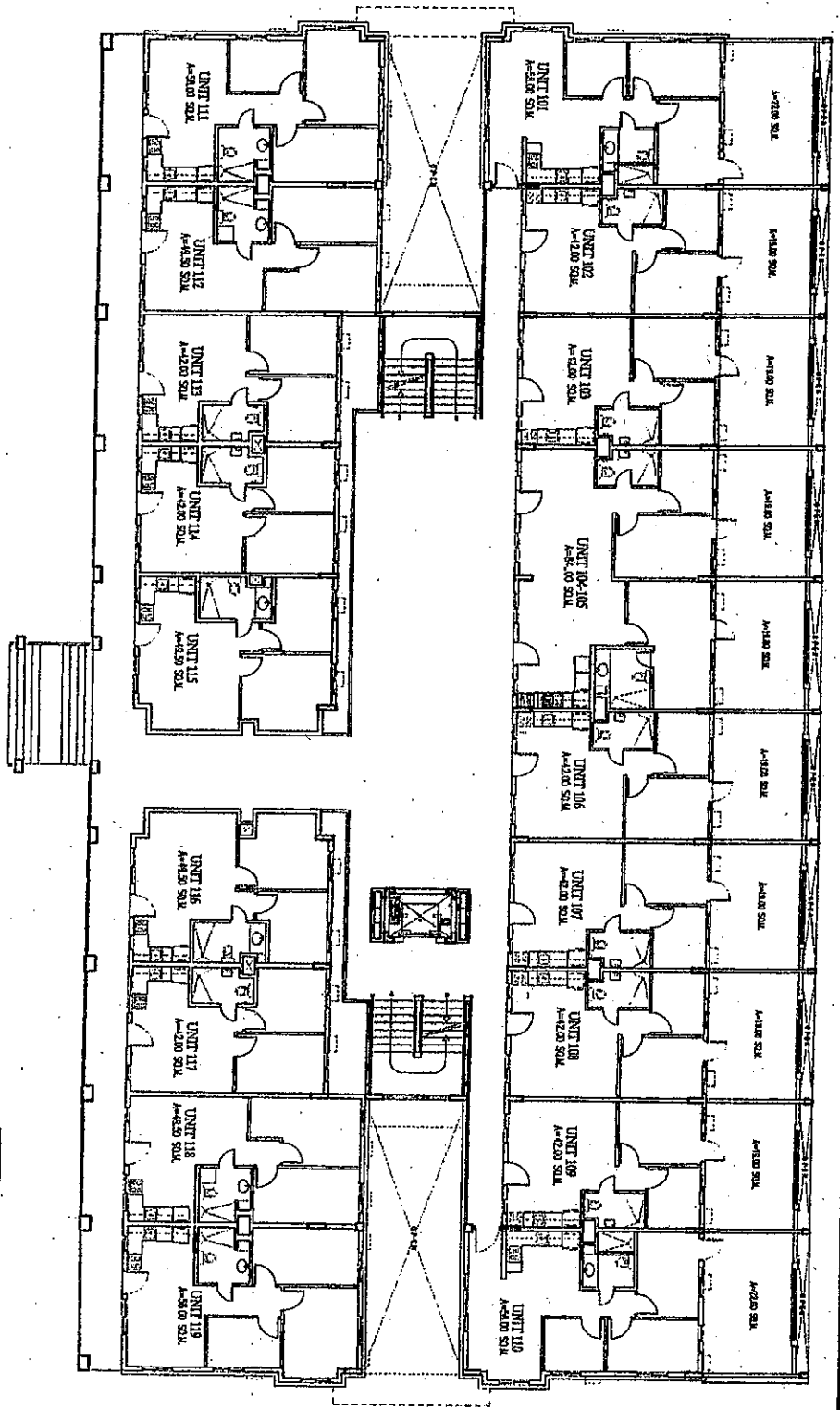
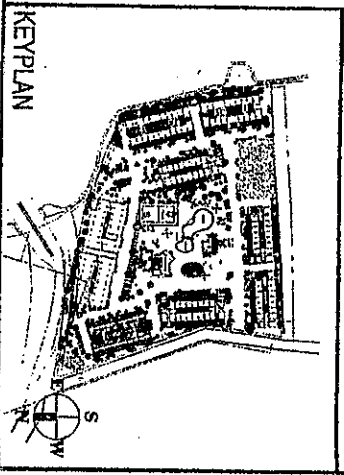




**D.M. CONSUMI, INC.**  
ENGINEERS · CONTRACTORS  
2281 PASCING LANE EXTENSION, WAKAHU CITY  
TEL. NO. 841-0841

*Rosewood Pointe*  
**BLDG. C - UPPER GROUND FLOOR PLAN**  
03 OCTOBER 2006

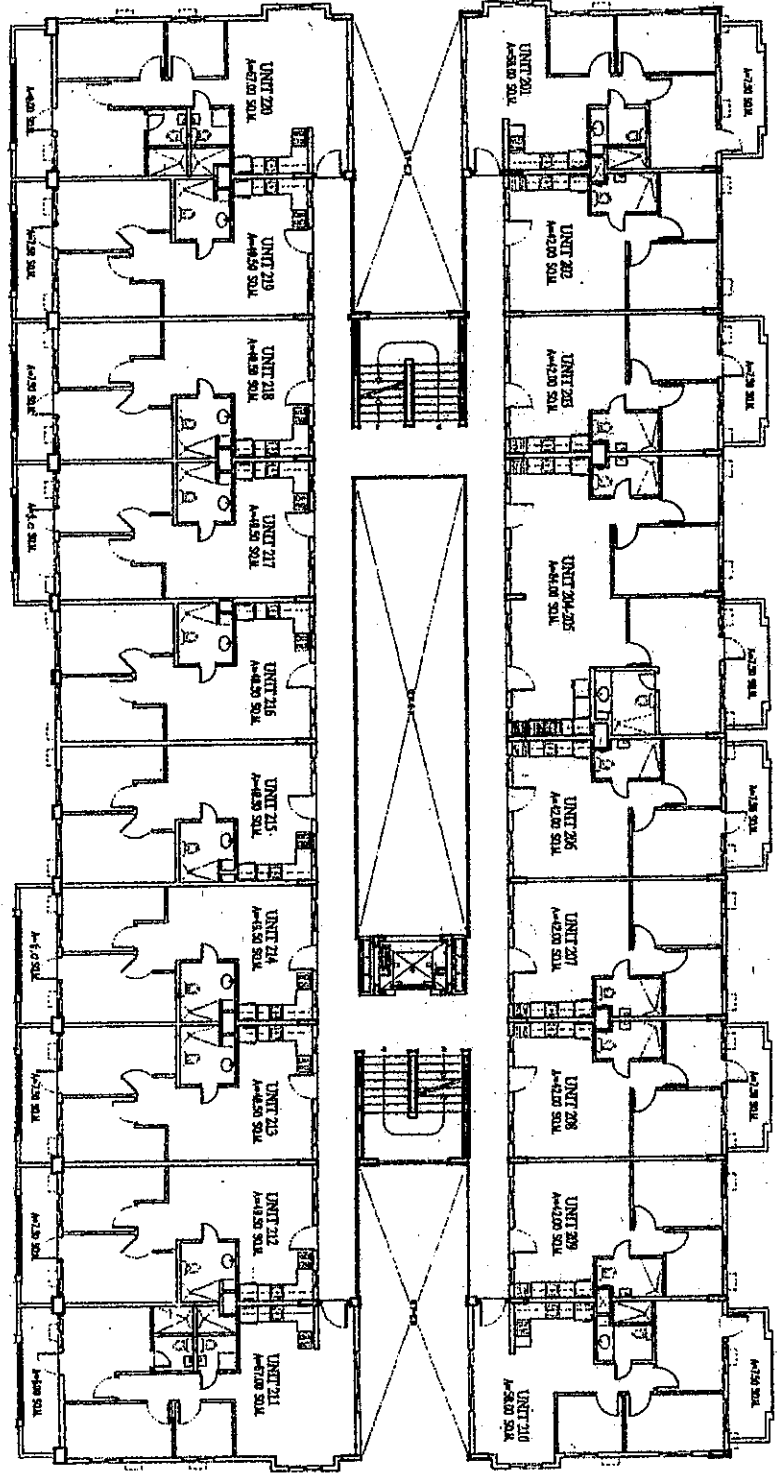
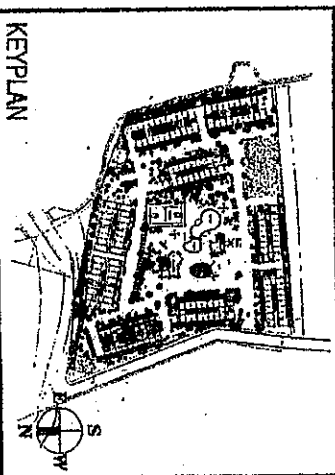
057





**D.M. CONSUNJI, INC.**  
ENGINEERS - CONTRACTORS  
2281 PASADENA TOWN CENTER, PASADENA CITY  
TEL. NO. 841-0841

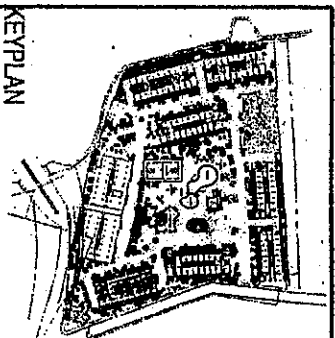
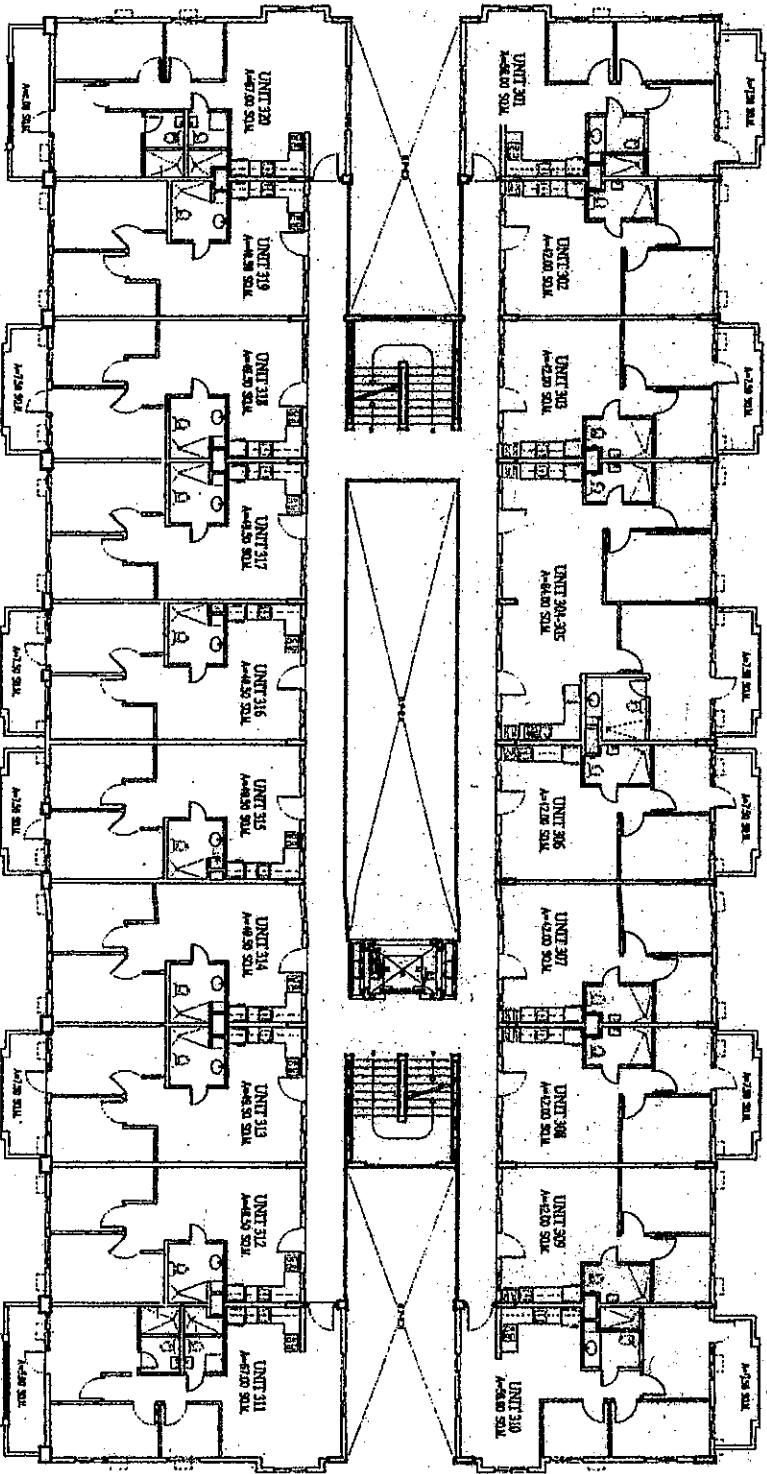
*Rosewood Pointe*  
**BLDG. C - SECOND FLOOR PLAN**  
09 OCTOBER 2006





**D.M. CONSUNJI, INC.**  
ENGINEERS - CONTRACTORS  
2281 PASONG TANDI EXTENSION, MAKATI CITY  
TEL. NO. 94-9841

*Rawwood Pointe*  
**BLDG. C - THIRD TO FIFTH FLOOR PLAN**  
03 OCTOBER 2006  
ARY





**D.M. CONSUNJI, INC.**  
ENGINEERS - CONTRACTORS  
2241 PASONG TAND EXTENSION, MAKATI CITY  
TEL. NO. 04-881

*Shawwood Pointe*  
**BLDG. C - ROOF DECK PLAN**

03 OCTOBER 2006

017

KEY PLAN

